

Phoenix USB Pro Burner Manual

Contents

1. install burner soft	2
1.1 install.....	2
1.2 program position.....	4
2. operation burner soft.....	4
2.1 operation burner soft.....	4
2.2 file choose.....	5
2.3 launch burner.....	6
2.4 attention.....	6
3. device burner.....	6
3.1 use PC USB burner.....	6
3.2 use USB HUB burner.....	9
3.3 judge device upgrade state.....	10
3.3.1 burner succeed.....	10
3.3.2 burner failed.....	10
4. matters need attention.....	11
4.1 insert device.....	11
4.2 extract device.....	11
5. stop burner soft.....	12
appendix: failed burner conditions and treatment method.	

1. Install burner soft

1.1 install

double click the icon, operate the soft install program

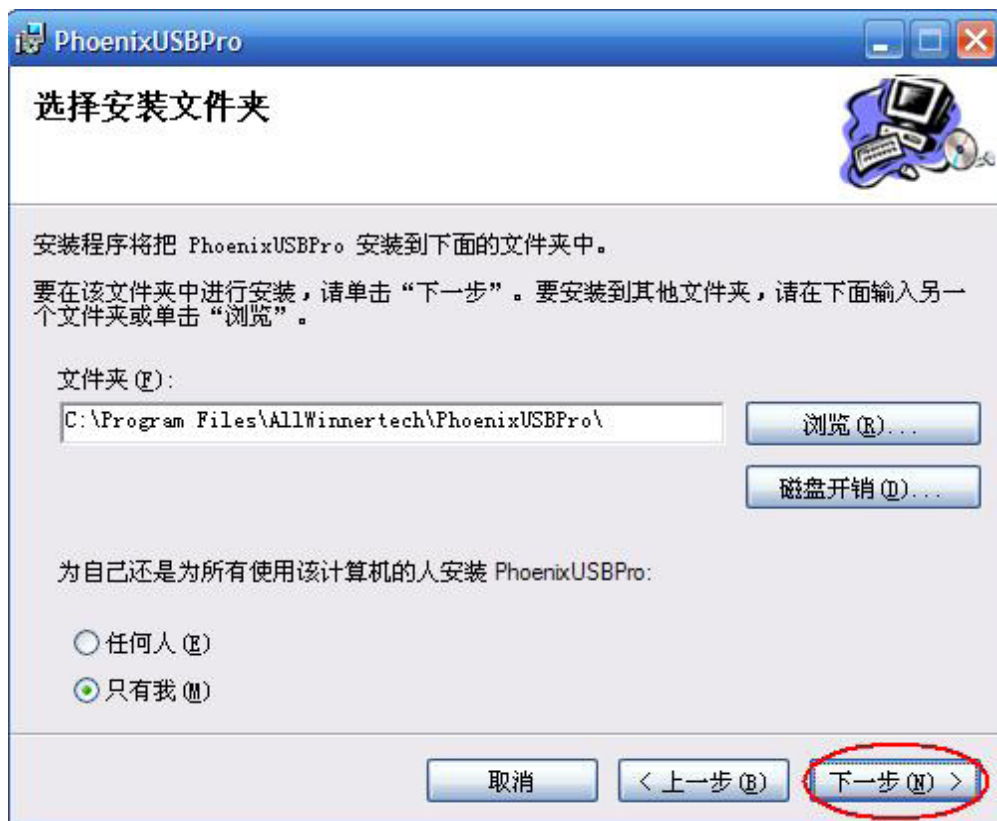
PhoenixPacket.msi, as picture 1.1 show



Picture 1

Install procedure click as below pictures show

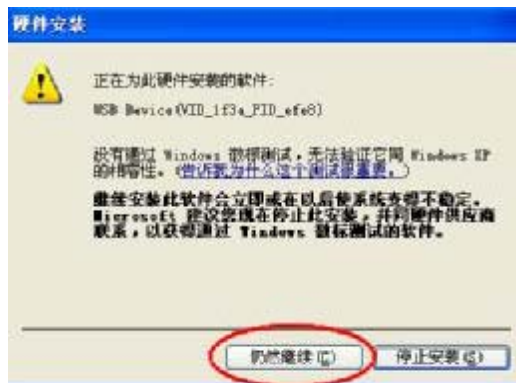






Picture1.2

Attention: it possible has the situation as picture 1.3 show when running install, please choose “continue” (C)



Picture1.3

1.2 program position

1.2.1 after install prompt interface closed automatic, open start menu can see



Open  PhoenixUSBPro量产工具 then can start burner soft

1.2.2 user can see the burner soft icon on the windows,
show as picture 1.4




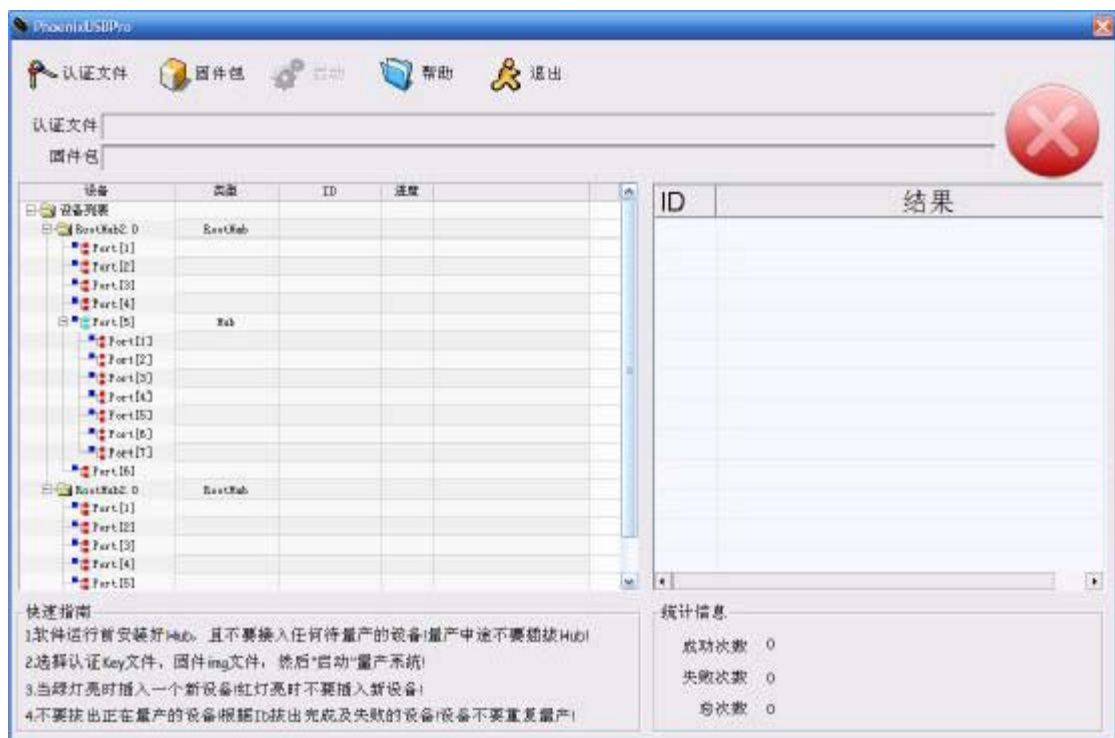
Picture 1.4

2.operation burner soft

2.1 operation burner soft

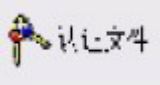


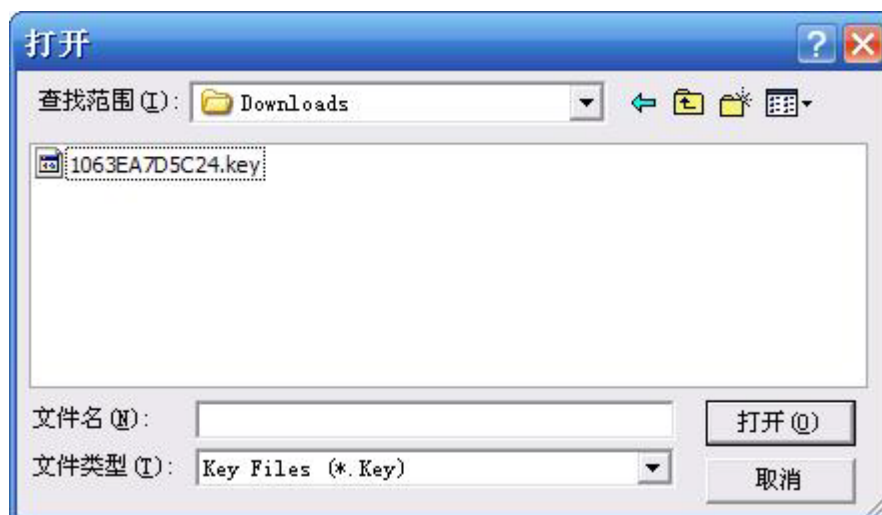
open burner soft  on windows, next will appear
main interface show as picture 2.1



Picture 2.1

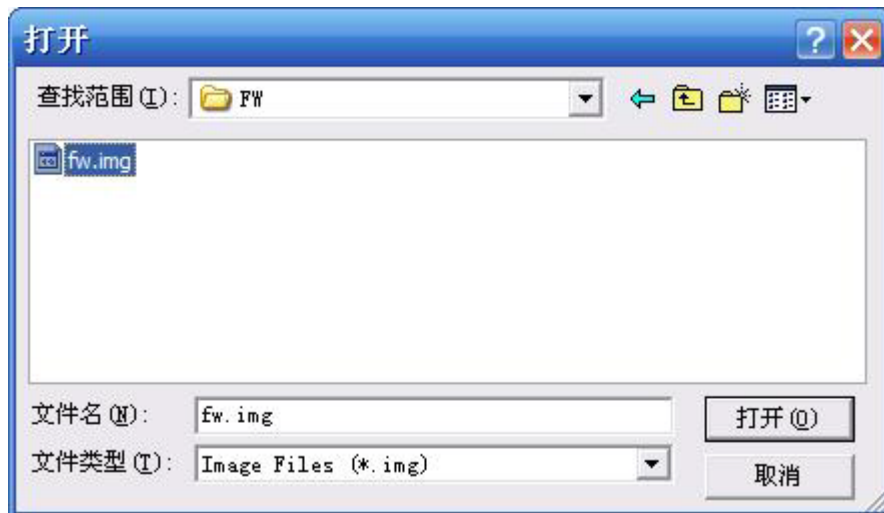
2.2 file choose

A. click  , then will popup



Click the file which suffix is .key

B. click  固件包 will popup





Select the file which suffix is .Img

2.3 launch burner




click button, you will see on the right above

main interface indicator light  change to 

2.4attention

a. must dial-out all devices before launch burner soft.

b. when the indicator is , please do not dial-out any devices.

3.devices burner

3.1 use PC USB burner


A. examine if every USB port working normal. If not , please mark it , when burner please do not use this port



B. after open burner soft on windows, click

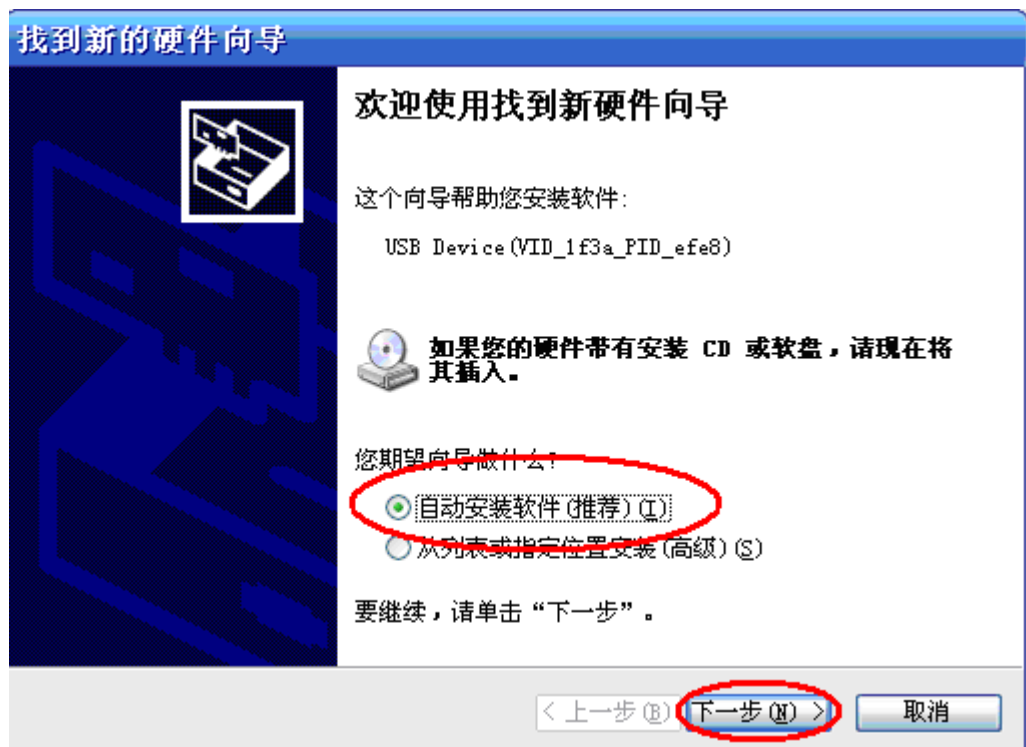


button, when the indicator light on right

above main interface change to , insert devices into computer's USB ports.

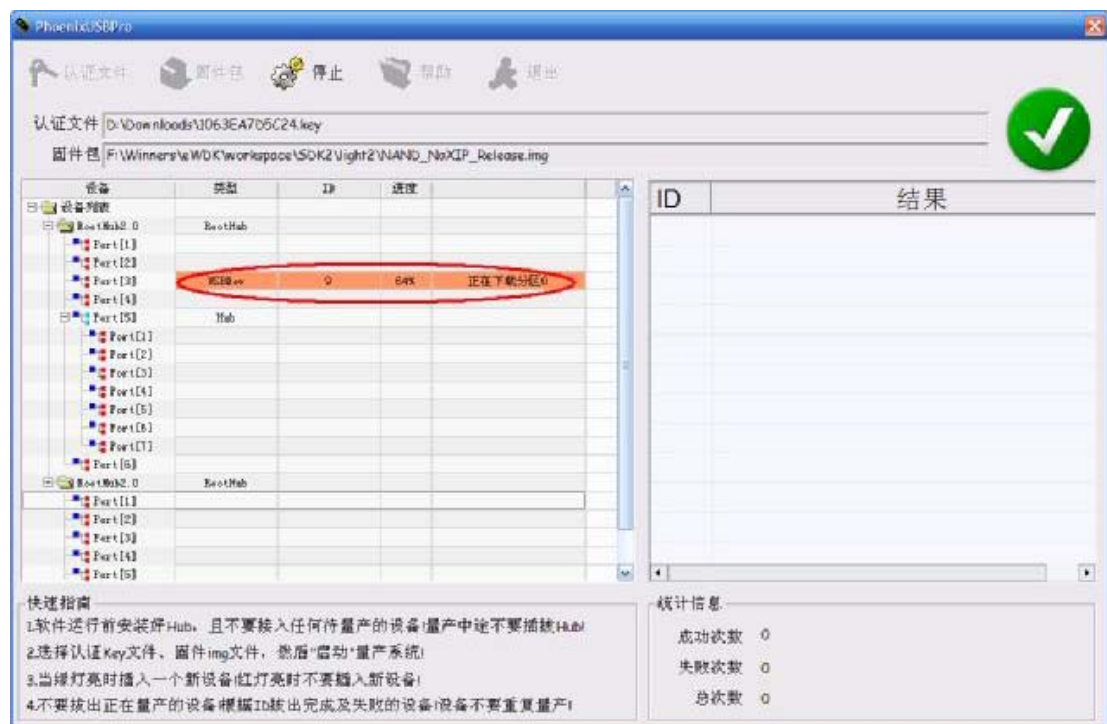


if the USB port is first time insert devices, it possible have situation show as below pictures(picture3.1,3.2), please do as red colour circle show



C. appear below picture (picture3.3) show after insert

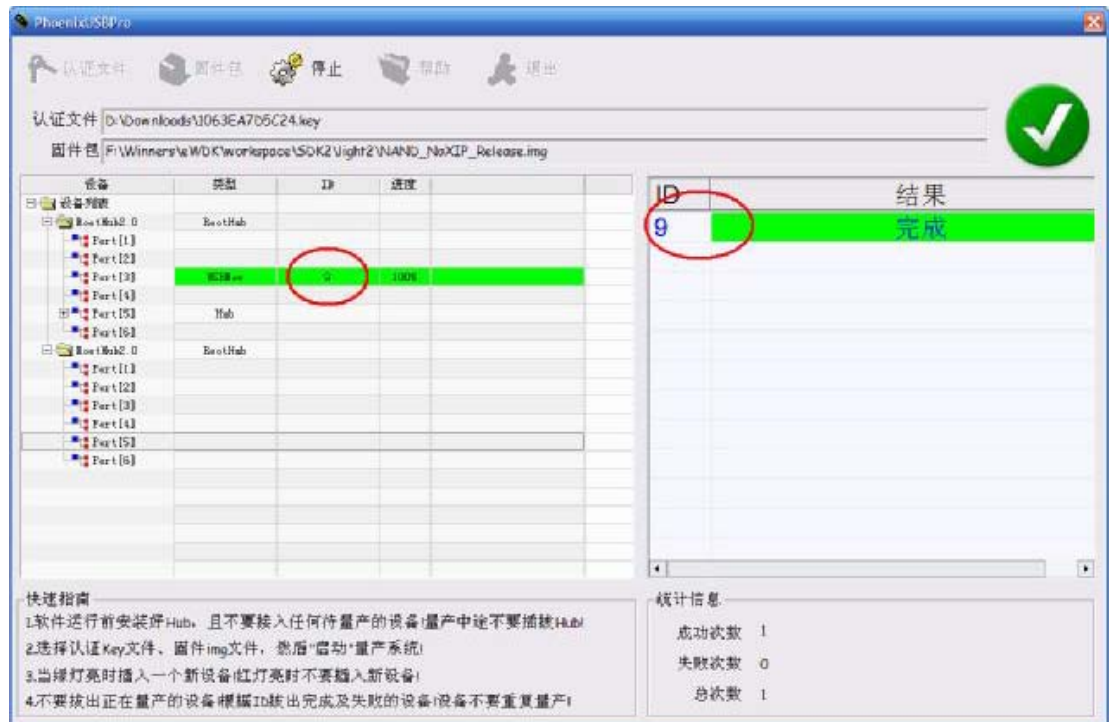
device , has orange red device indicator . soft will backup ID for every USB port. If the picture's ID is 9, express this USB port's device ID is all 9. please use label mark corresponding USB cable's ID number(this operating only needed do once). After burner finished, need this mark ID number to extract device.



Picture 3.3

D. after finish burner, appear below picture(3.4) show.


Now can extract device which mark ID number is 9.



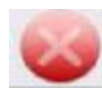
Picture3.4





attention:

1) only the indicator light is , you can insert now device.

2) After insert device, will appear indicator light



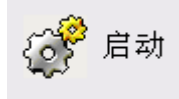
5-6 seconds, then change to .

3) If always keep , express the device has problems, detail information please look at appendix about burner failed situations and disposal method

3.2 use USB Hub burner

3.3 A. close burner soft, insert USB HUB in computer's

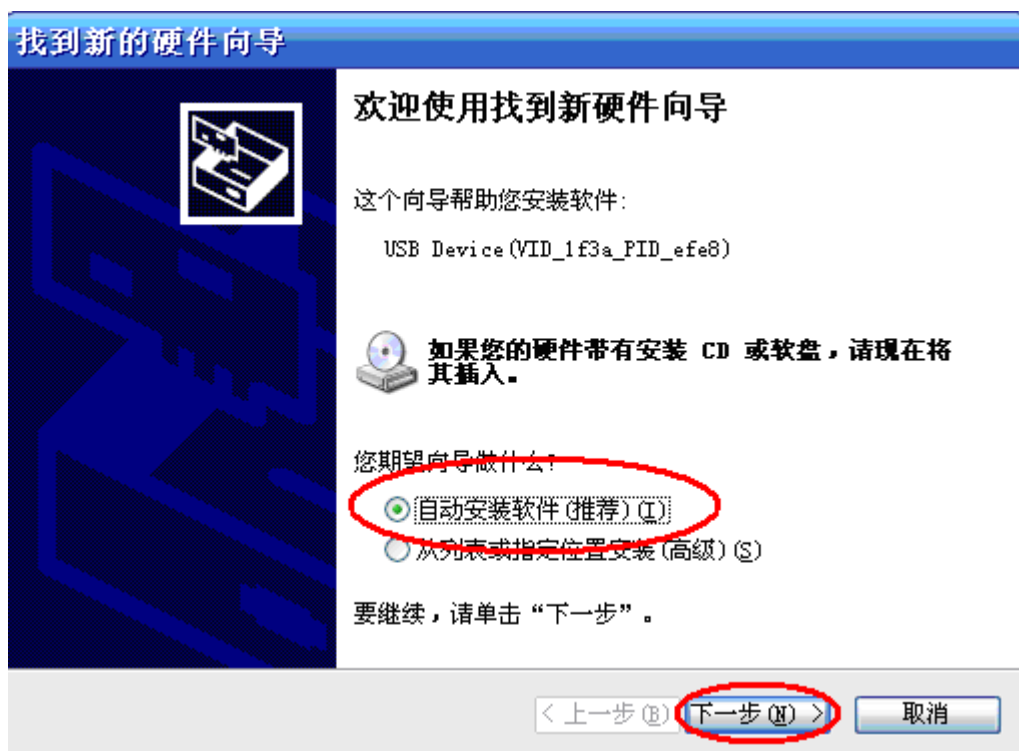
postposition USB port. Please attention: don't insert in prepose USB port. If HUB has power supply , please connect up.



B. launch burner soft, click button, access waiting for burner situation, insert device in computer's USB port when the right above interface's indicator light change to



.it possible has the situation show as picture3.5 when first insert device. Do as red circle shows will be ok.



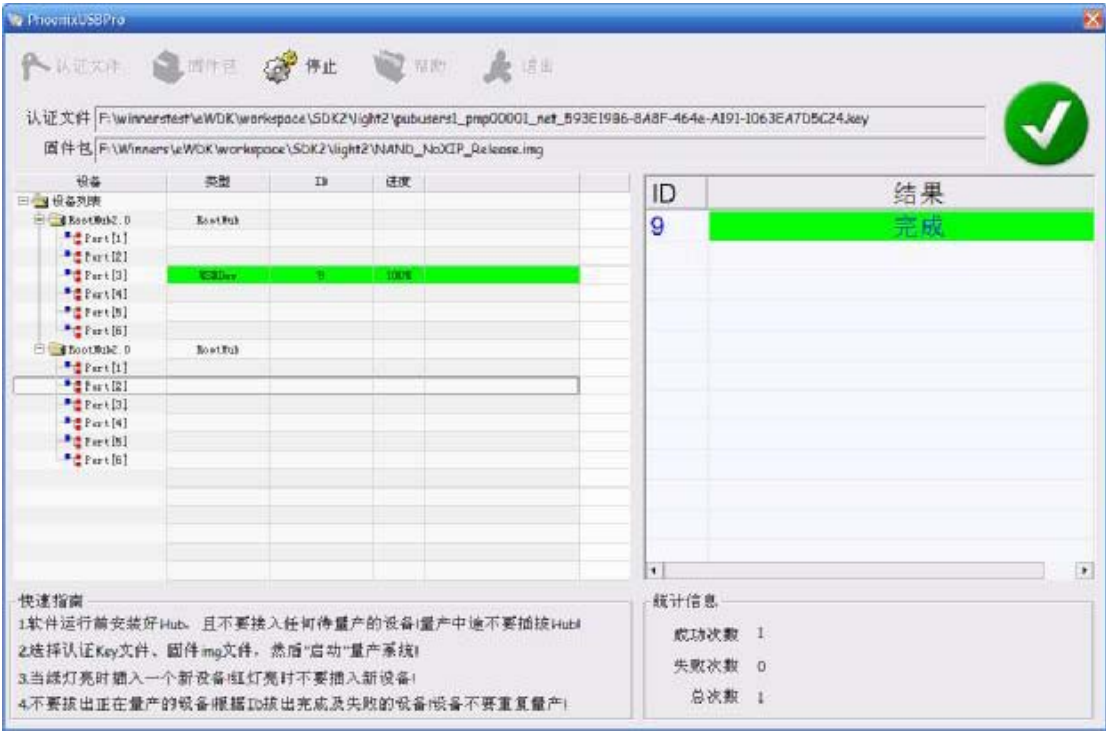
Picture 3.5

C. The next operations are the same with use PC USB burner. please do as 3.1 C-D steps.

3.4 judge device upgrade situation

3.3.1 burner success

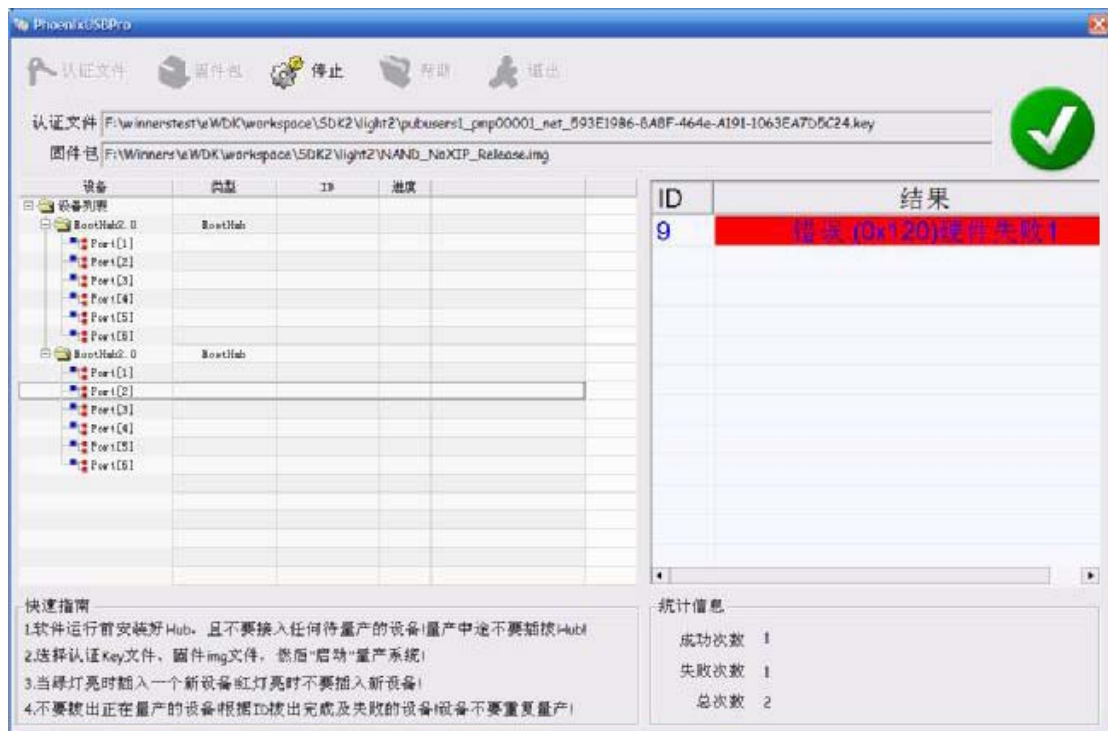
When the device is green color indicated by result and device list , that show device burner has succeed, show as picture 3.6, ID 9 device burner success.



Picture3.6

3.3.2 burner failed




When the device is red color indicated by result and device list, it shows failed burner . show as picture 3.7



Picture3.7

4 meters need attention

4.1 insert device


After click  button, only when the indicator light is , express this moment you can insert a new device. 

express this moment can not insert a new device, if insert device this moment , burner soft will appear fault, and extract automatic. Need launch again.

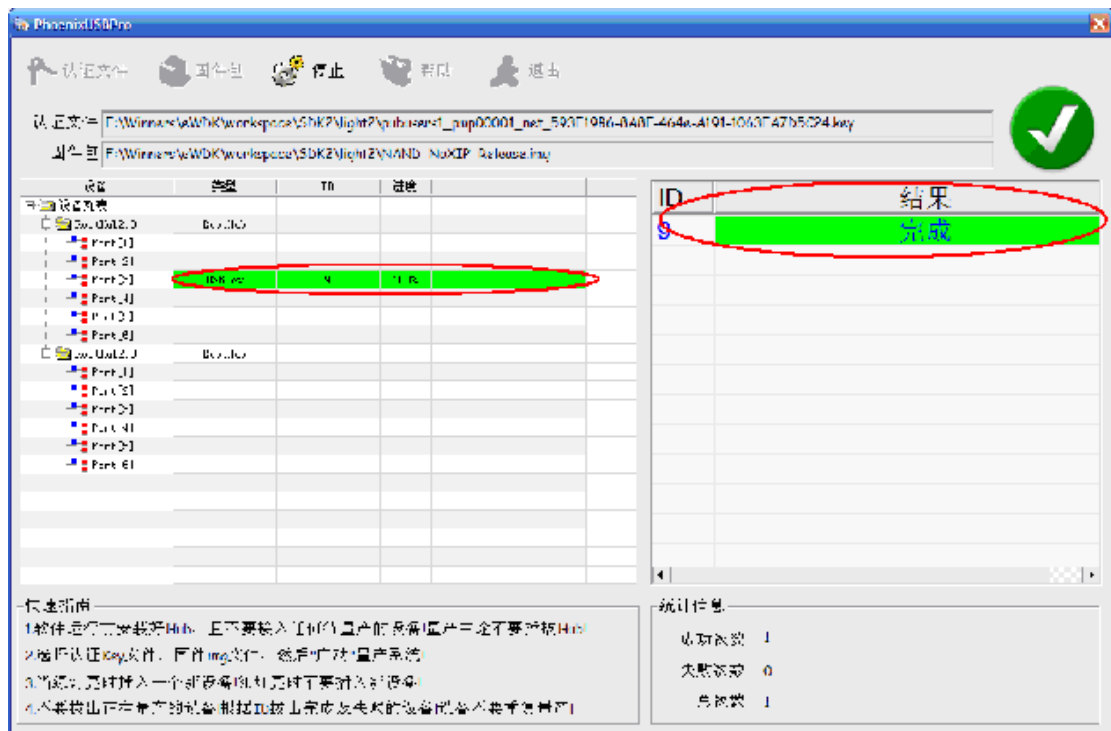
4.2 extract device

Whether device burner success or not, will express on the soft's right result list, users can according to the ID on the soft 's right , extract corresponding device. The burner results will be expressed by different colors:

 green shows burner succeed

 red show burner failed. Specific reasons can look at the page's state.

Show as picture4.1, device's ID number is 9 has finished burner, user can extract ID 9 device.



Picture 4.1


Attention:

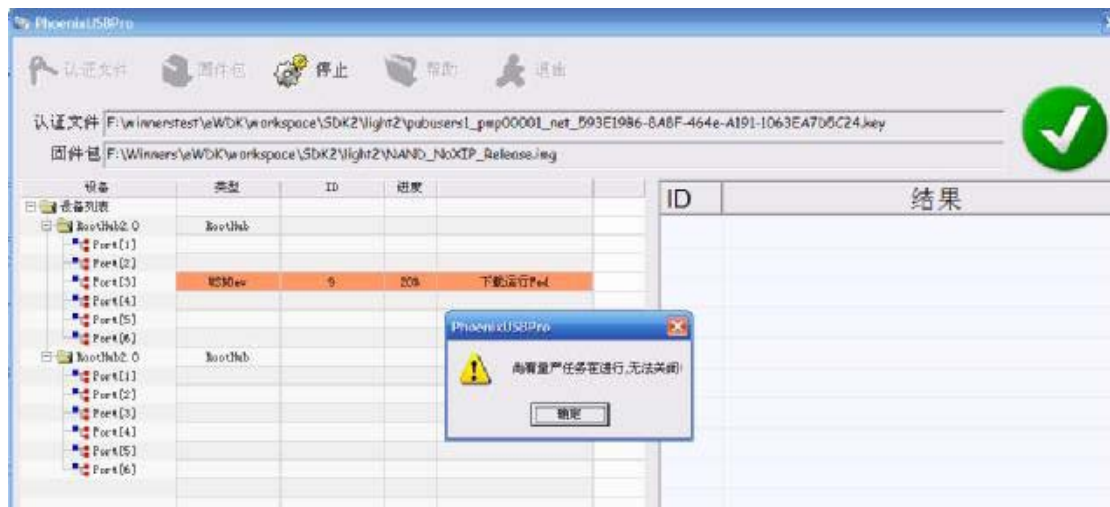
- 1 after open burner soft , can not extract Hub, then it can result system brake
- 2 when the device is not upgrade burner, forbid extract upgrading device. Only when the result list appear succeed or failed indicator, then can extract device.

5 stop burner soft

1 only when all devices finished upgrade, and the indicator

light is  , it can be stop.

2 when there are devices not finish upgrade, click  停止 , will appear picture 5.1 shows, can not be stop.



Picture5.1

Appendix: failed burner conditions and treatment method

1 why the indicator light always  after insert new device?

There are several reasons can result it :

- 1) device's Dram initialize failed. So can not be access
upgrade situation

2) the insert device come with battery and not cut electric after upgrade

solutions :

- 1) ensure Dram works normally or not, check electric cable.
- 2) Extract battery, access upgrade situation again

2 why new insert device can not be appeared in burner tool?

Solutions and steps:

- 1) Close burner soft
- 2) Connect USB Hub again, ensure power connected
- 3) Extract all devices connected with USB Hub
- 4) Launch burner tool again

3 why some devices will extract automatic after insert new devices?

It possible because there are too many devices connected with USB to supply enough power. Please reduce together burner devices .

4 the number of common failed burner and the state:

Fault number	Fault state
0X101	Open hard package failed

0X103	Open USB failed
0X105	Establish MBR failed
0X120	Storage medium scan failed
0X160	Download boot0 failed
0X161	Download boot1 failed
0X162	Download fed failed
0X163	Burner image failed
0X167	Download MBR failed
0X168	Download finish marks failed
0X190	System reset failed
0X104	Close USB failed
0X102	Close hard package failed

Remark: if brush have upgrade PCB or end product, please do as the below steps :

- 1 keep press voice button + , do not release
- 2 connect USB cable, insert device
- 3 press power button 10 times
- 4 release voice button

If long time can not appear upgrade device, please extract device and repeat the steps above.