

Shanling MW200

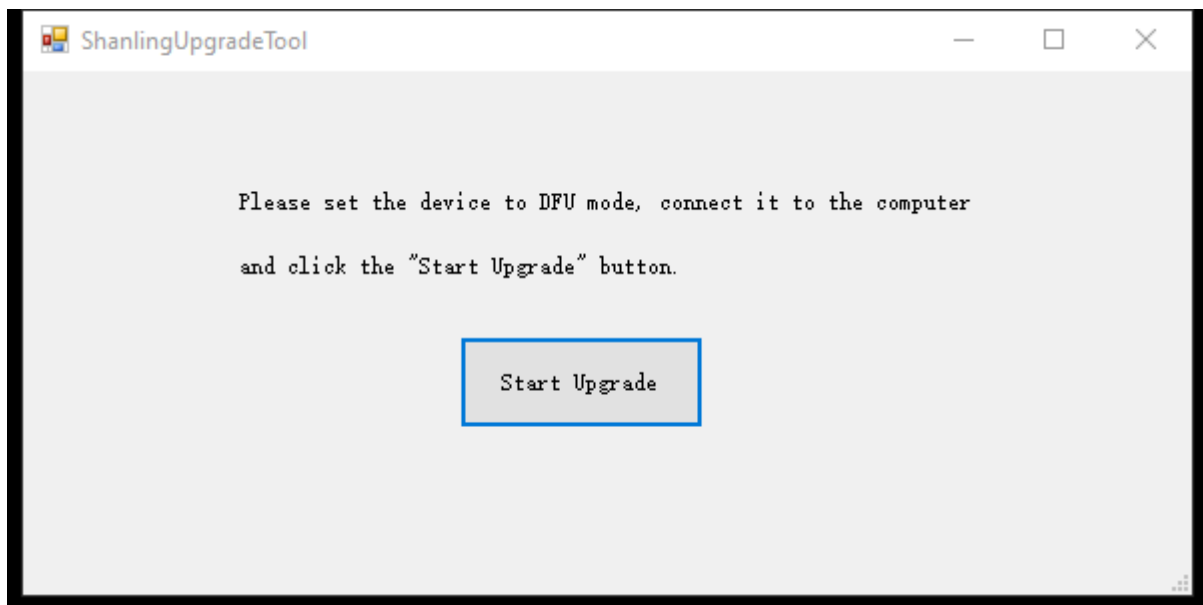
Firmware MANUAL UPGRADE GUIDE

Only available for Windows

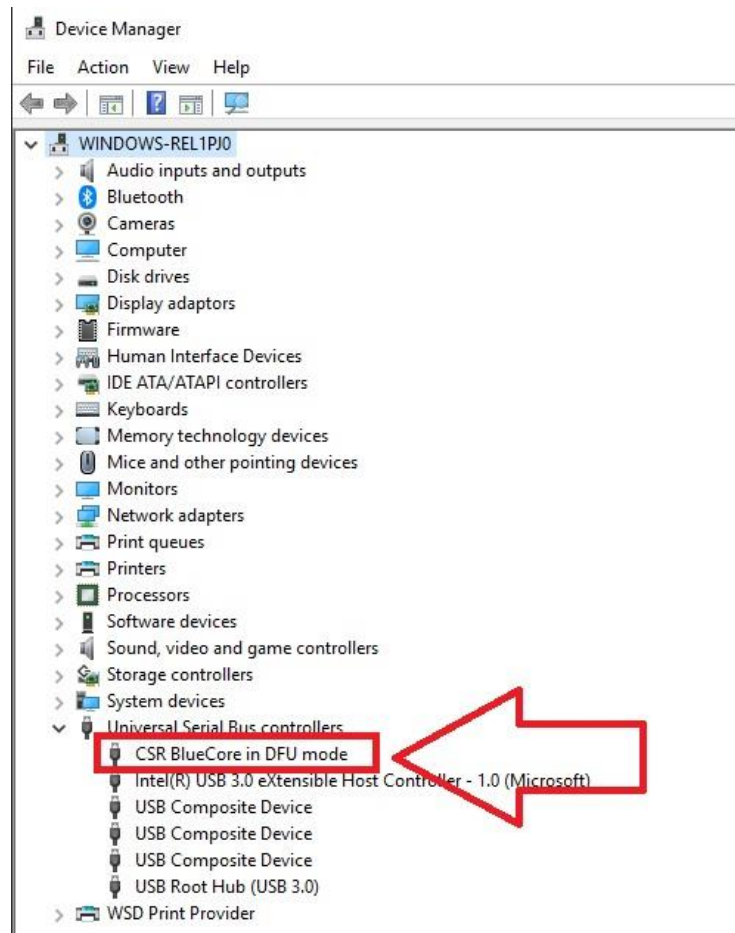
1. Make sure the “Firmware Upgrade” folder include these items:
 - “lib” folder – Do not alter or remove any of the files from this folder, do not alter the name of this folder.
 - “ShanlingUpgradeTool.exe” application
 - DFU file with the new firmware upgrade, such as “Shanling UP4 firmware V1.2.2.dfu”

Note: Only one DFU file can be located in folder, please delete any older DFU files and keep there only DFU file of the latest firmware.

2. Run the “ShanlingUpgradeTool.exe” application.
Be sure to run it as administrator, or you will get error message.
Wait until program automatically install needed drivers.



3. When you see this screen, it's time to connect MW200 to your computer and to switch it to DFU Mode.
 1. Connect Shanling MW200 to computer with USB-C cable. Red LED light will light up.
Press and hold the power button and the volume down button (the one closer to the power button) at the same time, until LED turns off.
 2. Go to "Device manager" on your computer and check if the "CSR BlueCore in DFU mode" item appears under "Universal Serial Bus controllers".
If this item doesn't appear, disconnect Shanling MW200 from computer and repeat process.



4. Click on the "Start Upgrade" button.
5. Wait until application finishes upgrading firmware.
Application will show "Successful Upgrade" message and LED light on MW200 will turn on.
6. Now you can close the software and disconnect MW200.
Firmware upgrade is finished.