

Shanling UP2/4 Firmware UPGRADE GUIDE

Only available for Windows

1. Make sure the “Firmware Upgrade” folder include these items:

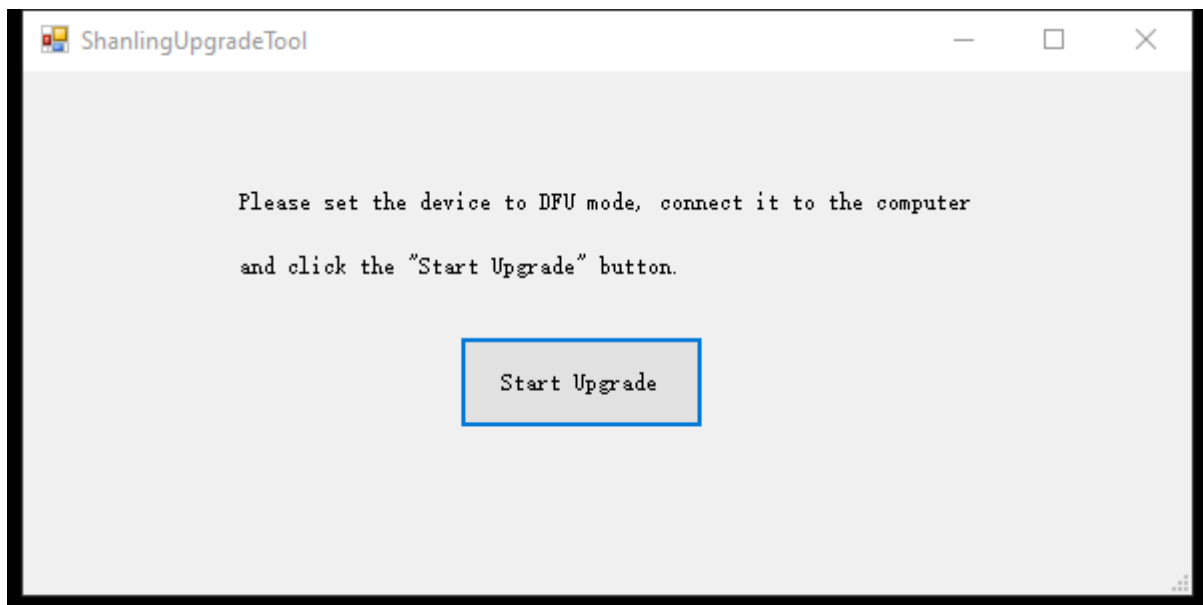
- “lib” folder – Do not alter or remove any of the files from this folder, do not alter the name of this folder.
- “ShanlingUpgradeTool.exe” application
- DFU file with the new firmware upgrade, such as “Shanling UP4 firmware V1.2.2.dfu”

Note: Only one DFU file can be located in folder, please delete any older DFU files and keep there only DFU file of the latest firmware.

2. Run the “ShanlingUpgradeTool.exe” application.

Be sure to run it as administrator, or you will get error message.

Wait until program automatically install needed drivers.



3. When you see this screen, it's time to connect UP2/4 to your computer and to switch them to DFU Mode.

A. Battery not fully charged

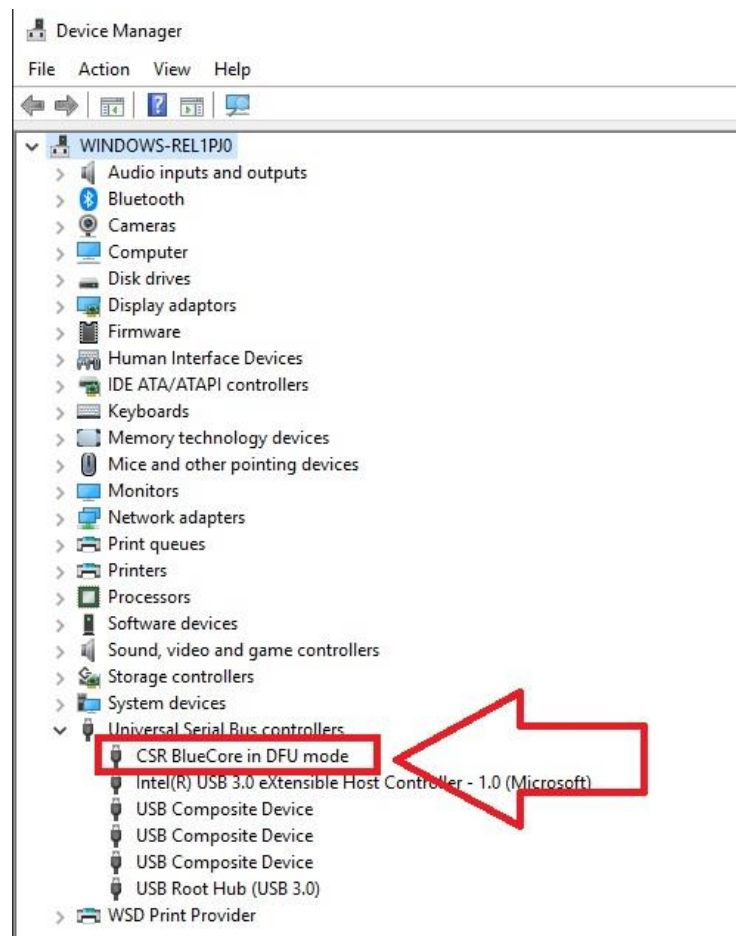
1. Connect Shanling UP2/4 to computer with USB-C cable. Red LED light will light up.
2. UP2 - Press and hold the wheel until LED turns off.
UP4 - Press and hold the wheel and the Mode button at the same time, until LED turns off.

B. Battery fully charged

1. Connect Shanling UP2/4 to computer with USB-C cable. Red LED light will quickly blink and turn off.
2. UP2 - Press and hold the wheel until blue LED light starts to blink, keep holding until light completely turns off.
UP4 - Press and hold the wheel and the Mode button at the same time, until blue LED light starts to blink, keep holding until light completely turns off.

Go to “Device manager” on your computer and check if the “CSR BlueCore in DFU mode” item appears under “Universal Serial Bus controllers”.

If this item doesn’t appear, disconnect Shanling UP2/4 from computer and repeat process.



4. Click on the “Start Upgrade” button.
5. Wait until application finishes upgrading firmware.
Application will show “Successful Upgrade” message and LED light on UP2/4 will turn on.
6. Now you can close the software and disconnect UP2/4.
Firmware upgrade is finished.